

ARIA[®]

NO COMPROMISES, NO SHORTCUTS.
THE ARIA[®] IS WHAT OTHER
MOTORHOMES WISH THEY COULD BE.



Made to fit.



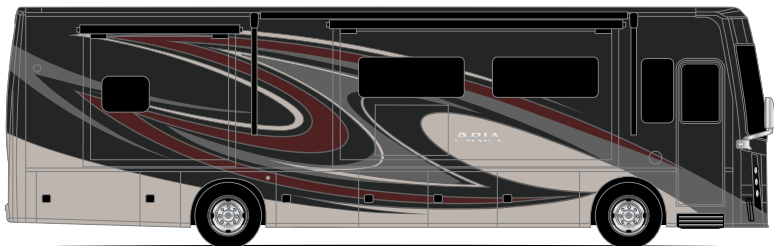
ARIA[®]

There's something about the open road that moves you. Maybe it's the freedom, maybe it's visiting family or seeing places you've always dreamed of.

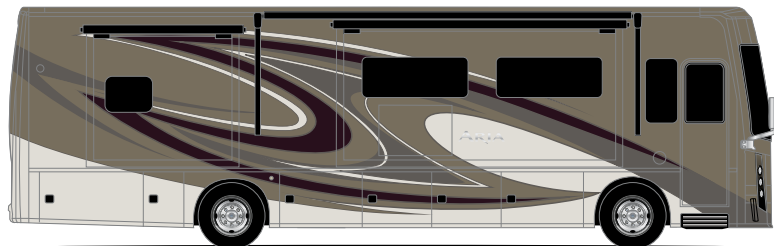
When you're ready to turn the open road into your own. The 2020 Aria from Thor Motor Coach; let us move you.



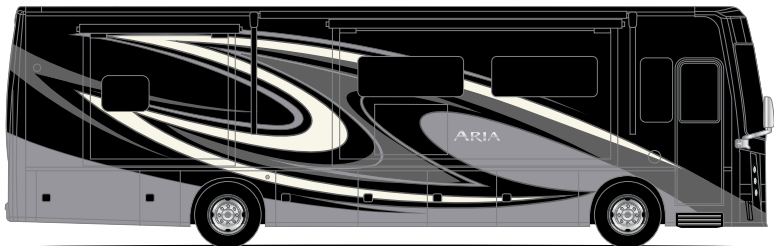
EXTERIOR OPTIONS



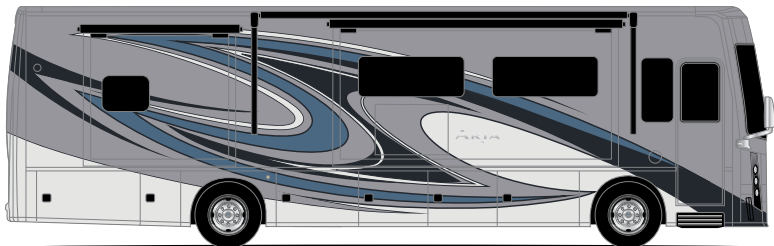
FIRE ISLAND II



MATRIX



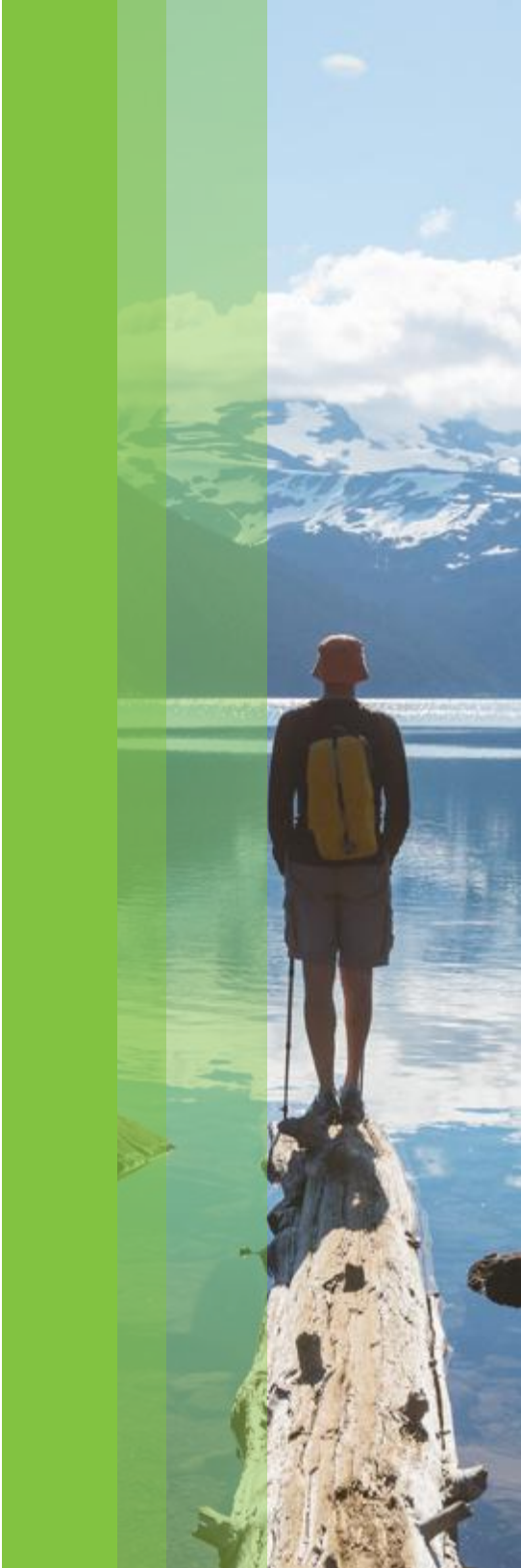
STARGATE



TIDAL WAVE

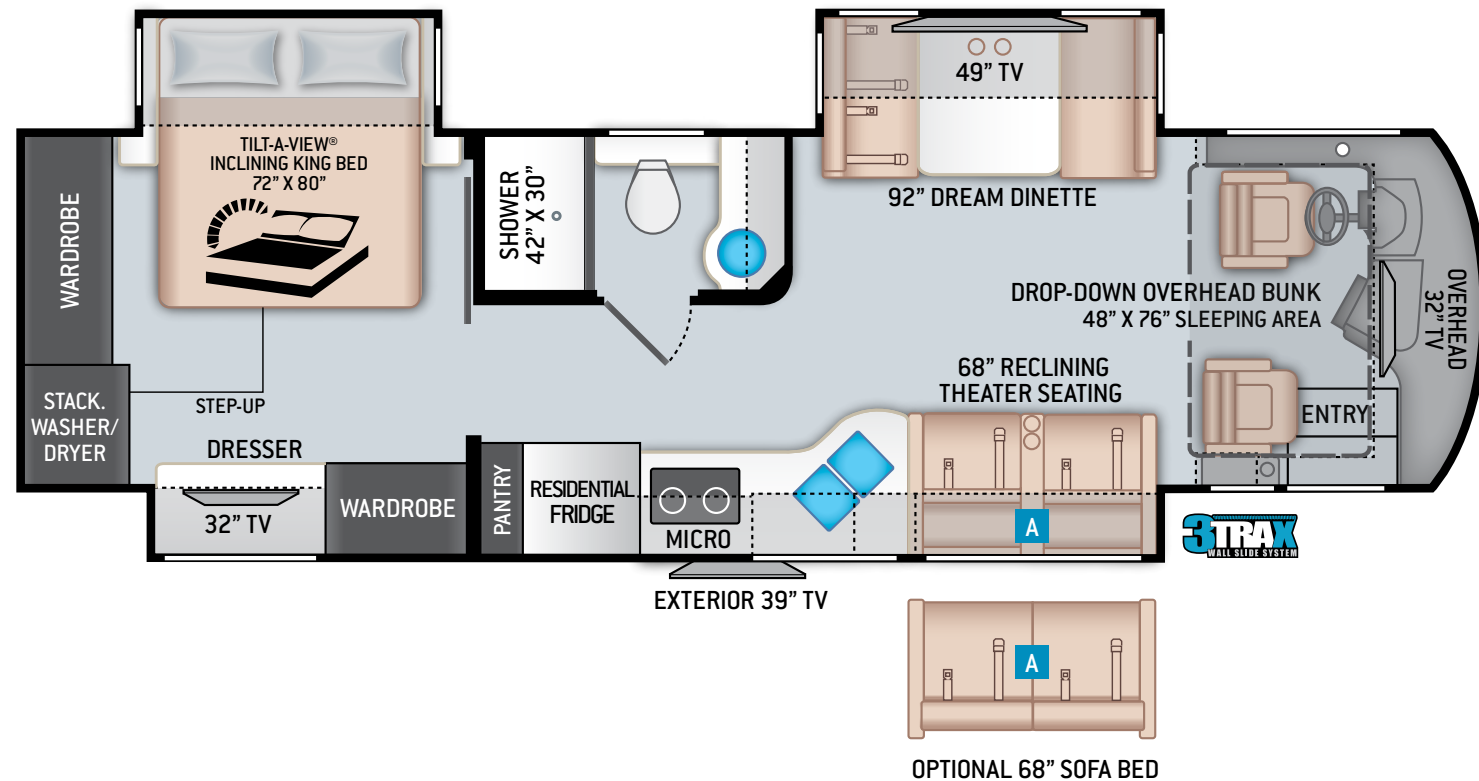


- A | FULL-BODY PAINT**
A striking exterior graphics design provides a jaw-dropping experience. The paint process includes alternating layers of paint with sanding in between to provide a glass-like exterior finish.
- B | WHISPER QUIET AIR CONDITIONING**
Specialized air conditioning system designed to provide maximum cooling. The multiple air returns help move air more efficiently, while the integration with the roof air conditioners reduces interior fan noise.
- C | POWER PATIO AWNING WITH INTEGRATED LED LIGHTING**
A legless, lateral arm awning is fully encased in a metal box protecting it during driving. When extended, the awning does not have legs intruding into the camp area and it has the ability to self-retract in windy situations.
- D | WIDE ENTRY**
An extra-large entry door provides easy entry, especially when carrying large items like groceries.
- E | SIDE VISION CAMERAS**
Side vision cameras integrated into the exterior mirror housing vastly increase the line of sight along the side of the coach, helping keep you safe on the road.



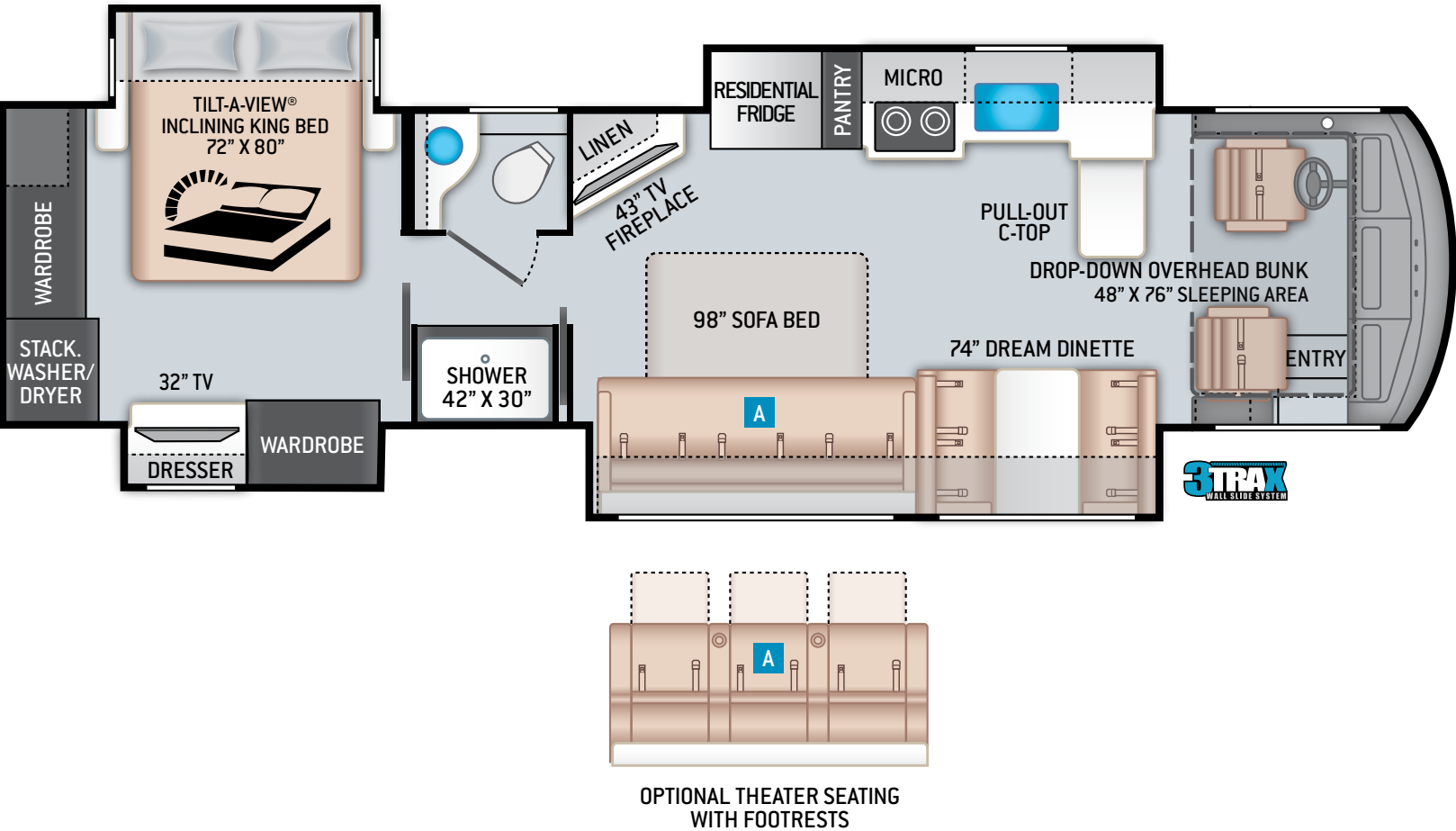


Floor plan for unit 3401. The layout includes a bedroom with a Tilt-A-View® Inclin King Bed (72" x 80") and a wardrobe. A bathroom features a shower (42" x 30"). The kitchen area contains a residential fridge, a microwave, and a stove. A stack washer/dryer is located near the bedroom. A 32" TV is positioned in the living area. The plan also shows a step-up and an exterior door labeled 'EXTERIOR 3'.



- ◆ Under 35 ft. (34' 7") diesel
 - state and national park friendly
- ◆ True 10,000-lbs towing with Allison 3000MH transmission
- ◆ Power drop-down hide-away overhead bunk with Cotton Cloud™ Mattress
- ◆ Full house Rapidcamp+® Multiplex wiring system, app-enabled and surge guard electrical protection
- ◆ Reclining theater seating across from 49" LED HDTV
- ◆ Massive 92" dream dinette with cup holders
- ◆ Pull-out pantry in kitchen
- ◆ 42"x30" fiberglass shower with built-in seat
- ◆ King size bed with Tilt-A-View® inclining bed mechanism
- ◆ Dual wardrobes and deep dresser drawers in master bedroom
- ◆ Stackable washer and dryer standard

FLOOR PLANS



3701

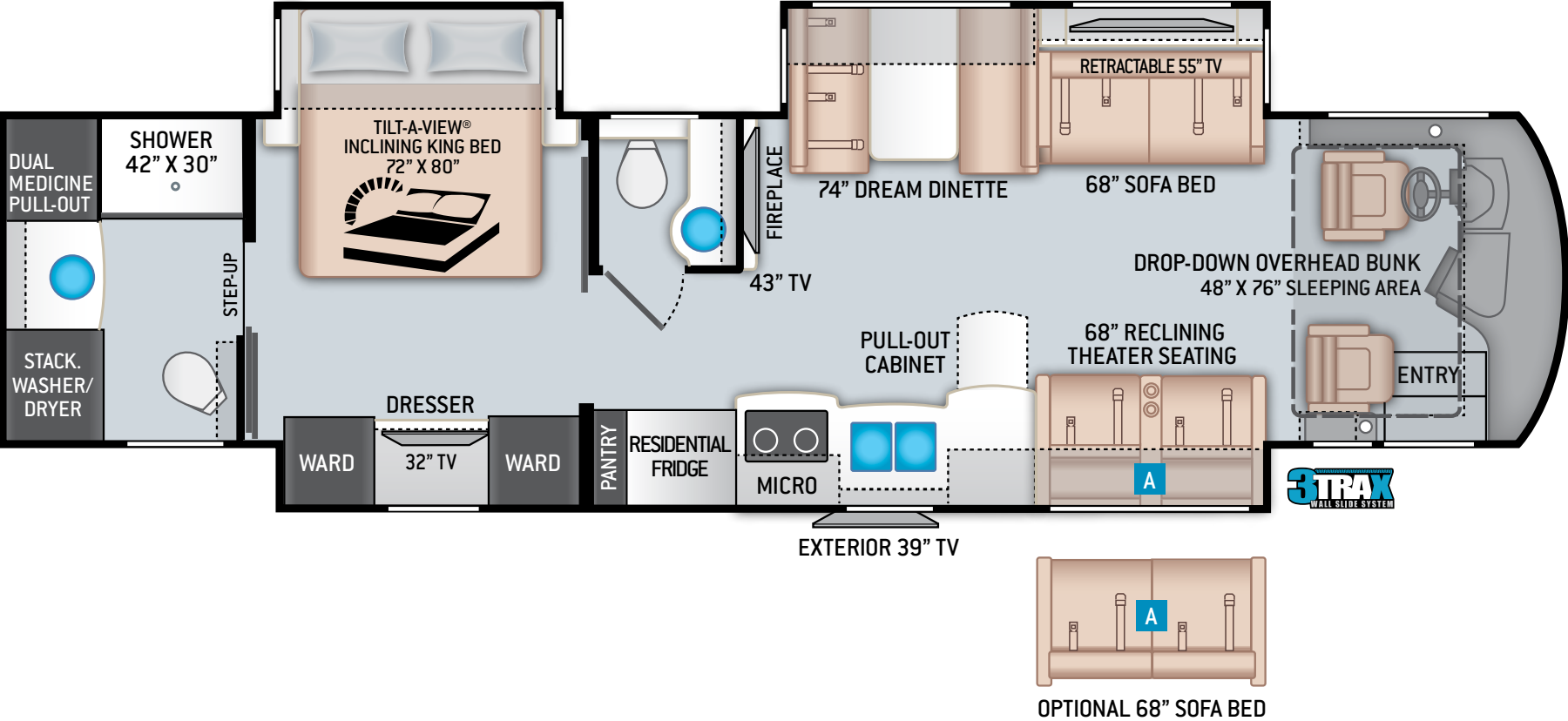
3701 FEATURES

- ◆ 38' - 8" diesel pusher with a corner fireplace with 43" TV in living space
- ◆ True 10,000-lbs towing with Allison 3000MH transmission
- ◆ Power drop-down hide-away overhead bunk with Cotton Cloud™ Mattress
- ◆ Rapidcamp+® Multiplex wiring system, app-enabled and surge guard electrical protection
- ◆ Leatherette expanding L-Sofa with sofa bed
- ◆ Pull-out counterrop in kitchen
- ◆ Pull-out pantry in kitchen
- ◆ 42"x30" fiberglass shower with built-in seat
- ◆ King size bed with Tilt-A-View® inclining bed mechanism
- ◆ Dual wardrobes and deep dresser drawers in master bedroom
- ◆ Stackable washer and dryer standard

SPECIFICATIONS

3701	
CHASSIS	Freightliner XC-R
GROSS VEHICLE (GVWR)	35,320
GROSS COMBINED (GCWR)	45,320
WHEEL BASE	252"
EXTERIOR LENGTH (W/O LADDER)	38'-3"
EXTERIOR HEIGHT (W/AC)	12'-6"
EXTERIOR WIDTH (W/O MIRRORS)	101"
INTERIOR HEIGHT (LIVING AREA)	84"
AWNING SIZE	13'-6"
FUEL (GAL)	100
LPG (LBS)	105
FRESH/WASTE/GRAY WATER (GAL)	91 / 51 / 70
WATER HEATER (GAL)	Tankless
FURNACE (BTUS)	35,000
EXTERIOR STORAGE CAPACITY (CU. FT.)	170
HITCH WEIGHT RATING (LBS)	10,000

FLOOR PLANS



3901

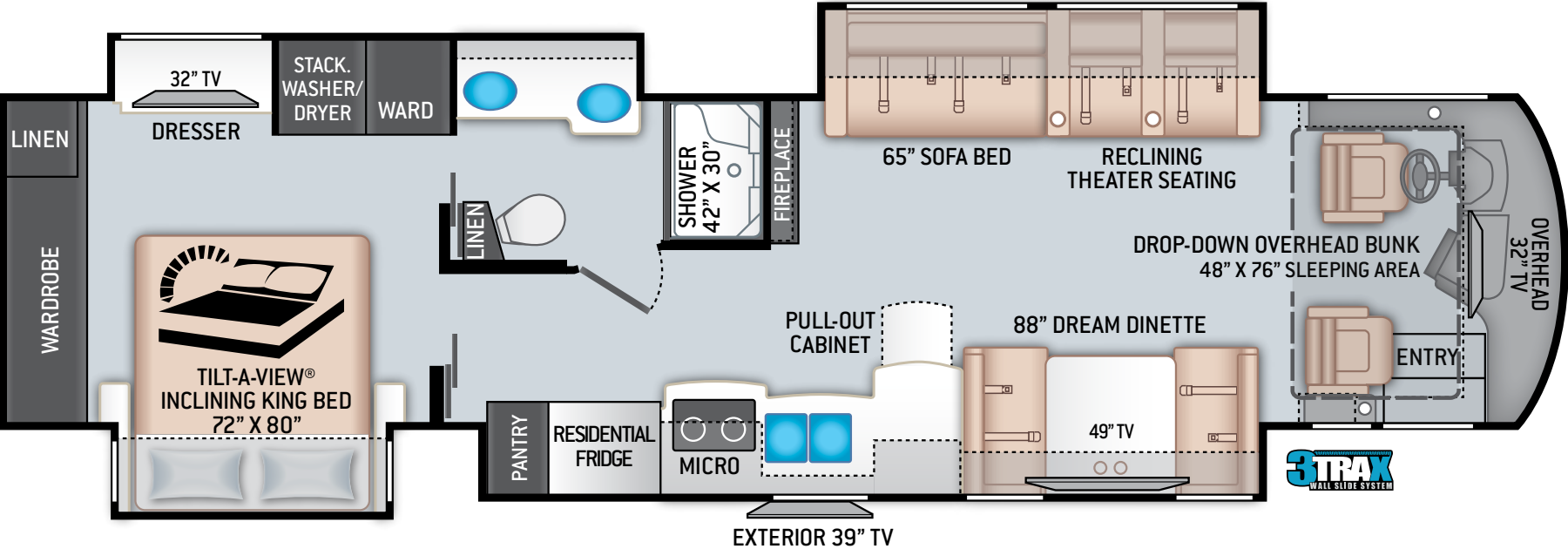
3901 FEATURES

- ◆ 39' - 11" diesel pusher with full rear master bath and half bath
- ◆ True 10,000-lbs towing with Allison 3000MH transmission
- ◆ Power drop-down hide-away overhead bunk with Cotton Cloud™ Mattress
- ◆ Full house Rapidcamp+® Multiplex wiring system, app-enabled and surge guard electrical protection
- ◆ Reclining theater seating facing retractable 55" LED HDTV
- ◆ 68" sofa bed gives opposing seating ideal for entertaining
- ◆ Electric fireplace with remote under 43" LED HDTV Mid-ship
- ◆ King size bed with Tilt-a-View® inclining bed mechanism
- ◆ 42"x30" fiberglass shower with built-in seat
- ◆ Stackable washer and dryer

SPECIFICATIONS

	3901
CHASSIS	Freightliner XC-R
GROSS VEHICLE (GVWR)	35,320
GROSS COMBINED (GCWR)	45,320
WHEEL BASE	272"
EXTERIOR LENGTH (W/O LADDER)	39'-11"
EXTERIOR HEIGHT (W/AC)	12'-6"
EXTERIOR WIDTH (W/O MIRRORS)	101"
INTERIOR HEIGHT (LIVING AREA)	84"
AWNING SIZE	20'
FUEL (GAL)	100
LPG (LBS)	105
FRESH/WASTE/GRAY WATER (GAL)	91 / 51 / 51
WATER HEATER (GAL)	Tankless
FURNACE (BTUS)	35,000
EXTERIOR STORAGE CAPACITY (CU. FT.)	215
HITCH WEIGHT RATING (LBS)	10,000

FLOOR PLANS



3902

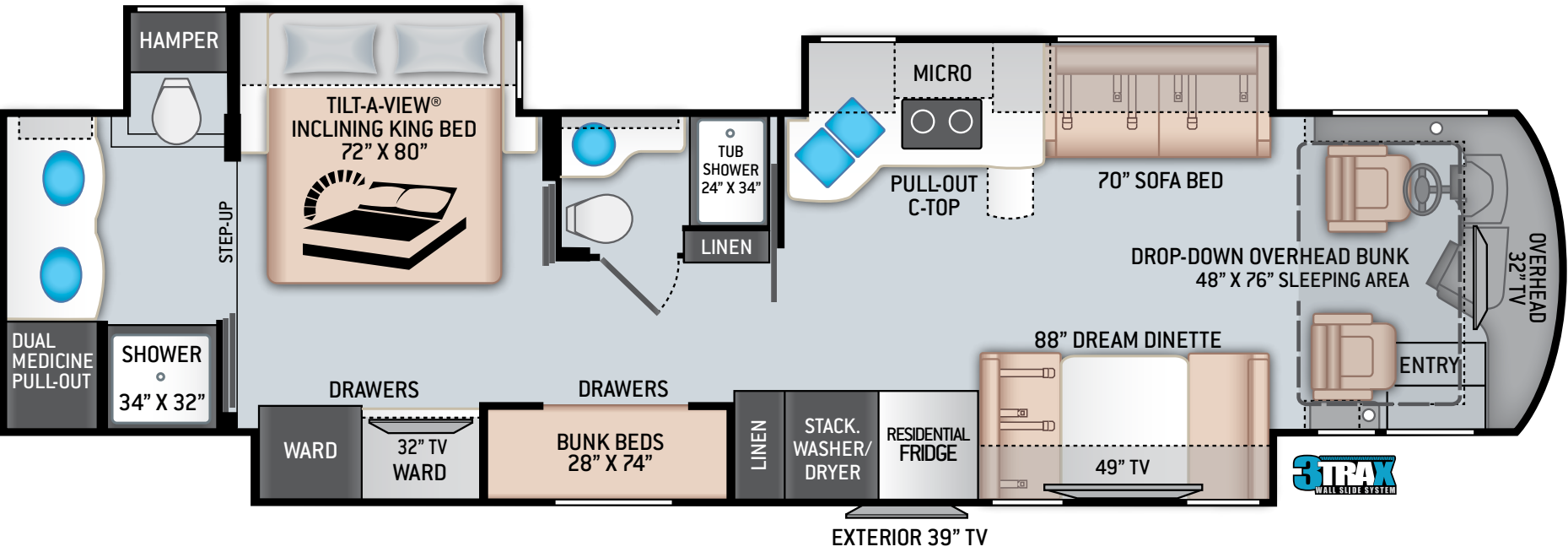
3902 FEATURES

- ◆ 39' - 11" diesel pusher with full rear bath and dual vanity sinks
- ◆ True 10,000-lbs towing with Allison 3000MH transmission
- ◆ Power drop-down hide-away overhead bunk with Cotton Cloud™ Mattress
- ◆ Full house Rapidcamp+® Multiplex wiring system, app-enabled and surge guard electrical protection
- ◆ Reclining theater seating facing 49" LED HDTV
- ◆ Electric fireplace with remote
- ◆ King size bed with Tilt-a-View® inclining bed mechanism
- ◆ 42"x30" fiberglass shower with built-in seat
- ◆ Stackable washer and dryer

SPECIFICATIONS

3902	
CHASSIS	Freightliner XC-R
GROSS VEHICLE (GVWR)	35,320
GROSS COMBINED (GCWR)	45,320
WHEEL BASE	272"
EXTERIOR LENGTH (W/O LADDER)	39'-11"
EXTERIOR HEIGHT (W/AC)	12'-6"
EXTERIOR WIDTH (W/O MIRRORS)	101"
INTERIOR HEIGHT (LIVING AREA)	84"
AWNING SIZE	18'
FUEL (GAL)	100
LPG (LBS)	105
FRESH/WASTE/GRAY WATER (GAL)	91 / 51 / 70
WATER HEATER (GAL)	Tankless
FURNACE (BTUS)	(2) 20,000
EXTERIOR STORAGE CAPACITY (CU. FT.)	215
HITCH WEIGHT RATING (LBS)	10,000

FLOOR PLANS



4000

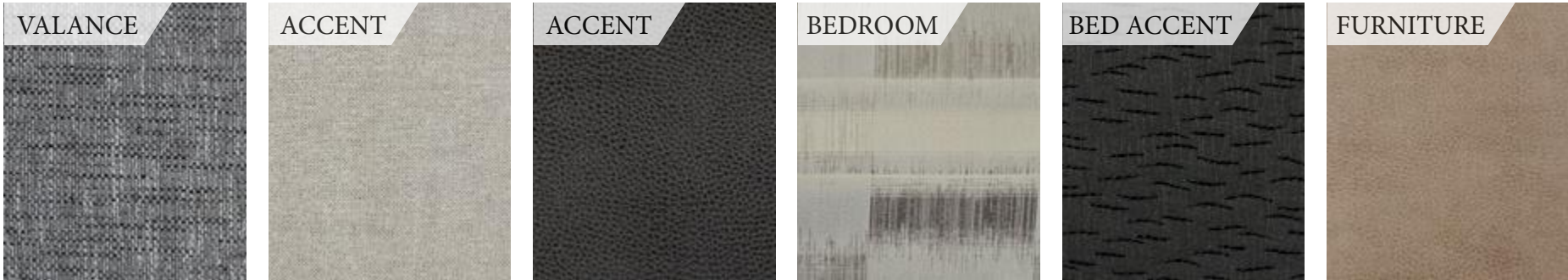
4000 FEATURES

- ◆ Two full bathroom bunkhouse diesel with sleeping up to 10
- ◆ Tub and shower in middle bathroom ideal for kids or guests
- ◆ True 10,000-lbs towing with Allison 3000MH transmission
- ◆ Power drop-down hide-away overhead bunk with Cotton Cloud™ Mattress
- ◆ Full house Rapidcamp+® Multiplex wiring system, app enabled and surge guard electrical protection
- ◆ 49" LED HDTV across from 70" sofa bed in living space
- ◆ Massive 88" dream dinette with cup holders
- ◆ King size bed with Tilt-a-View® inclining bed mechanism
- ◆ Each bunk includes a 15" TV and DVD player
- ◆ Dual sinks in large expanding master bathroom
- ◆ Stackable washer and dryer

SPECIFICATIONS

	4000
CHASSIS	Freightliner XC-R
GROSS VEHICLE (GVWR)	35,320
GROSS COMBINED (GCWR)	45,320
WHEEL BASE	284"
EXTERIOR LENGTH (W/O LADDER)	40'-11"
EXTERIOR HEIGHT (W/AC)	12'-6"
EXTERIOR WIDTH (W/O MIRRORS)	101"
INTERIOR HEIGHT (LIVING AREA)	84"
AWNING SIZE	20'
FUEL (GAL)	100
LPG (LBS)	105
FRESH/WASTE/GRAY WATER (GAL)	91 / 51 / 70
WATER HEATER (GAL)	Tankless
FURNACE (BTUS)	(2) 20,000
EXTERIOR STORAGE CAPACITY (CU. FT.)	240
HITCH WEIGHT RATING (LBS)	10,000

I N T E R I O R O P T I O N S



OBSIDIAN



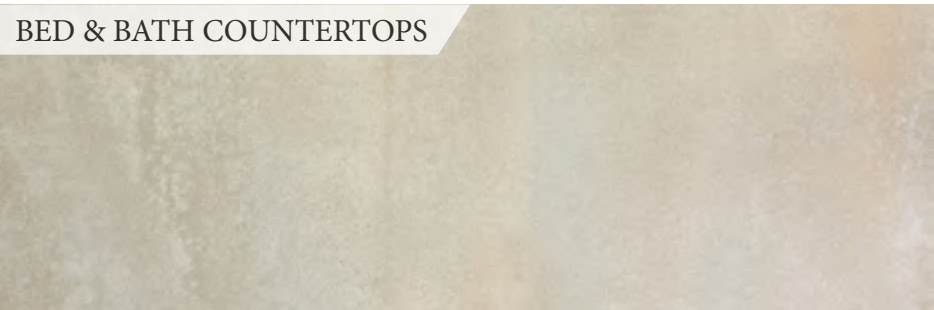
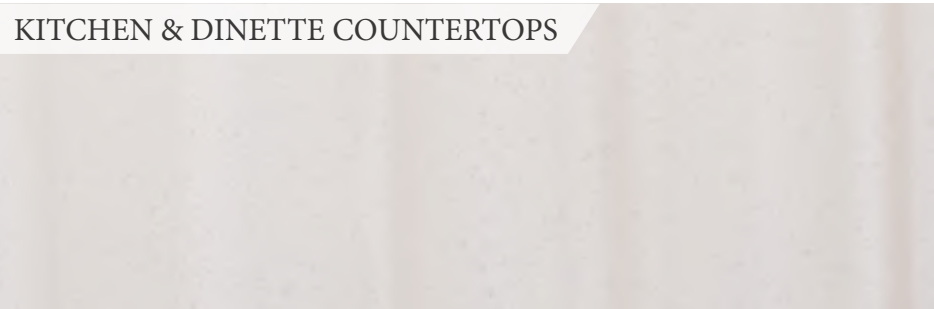
PEBBLE RIDGE



STUDIO COLLECTION SOLACE



STUDIO COLLECTION SOLACE





SPECIAL FEATURES



Winegard® Connect™ 2.0
4G LTE Router and WiFi Extender



Exterior TV on Manual Swivel
with Sound Bar



100-watt Solar Charging System
with Power Controller



Cummins® Onan RV QD 8000
Diesel Generator



King Size Bed with Tilt-a-View®
Inclining Bed Mechanism and USB
Charging Ports in Nightstands



Multiplex Wiring Control
System with 7" Touchscreen



Dual 15,000 BTU Whisper
Quiet Air Conditioners with
Heat Pumps



Freightliner® XC-R Raised
Rail Chassis with
Atlas Foundation™



Stackable Washer and Dryer



Power Drop-Down Hide-Away
Overhead Bunk with
Cotton Cloud™ Mattress



Dual Touchscreen Dash Radio
with Bluetooth® and GPS
Navigation/Back-Up Monitor with
Three Camera System



High-Gloss Glazed Solid Wood
Cabinet Doors and Fascia with
Nickel Finish Hardware



FEATURED HIGHLIGHTS

CONSTRUCTION & EXTERIOR

- ♦ Freightliner® XC-R Raised Rail Chassis with Atlas Foundation™
- ♦ Cummins® ISB-XT 6.7L Engine with 360HP & 800 lb.-ft. Torque
- ♦ 6-Speed Allison MH-3000 Automatic Transmission
- ♦ Air-Ride™ Suspension
- ♦ I-Beam Front Axle with 55° Wheel Cut
- ♦ Exhaust Brake
- ♦ Sachs® Shock Absorbers
- ♦ 100-gallon Fuel Tank with Dual Fills
- ♦ One-Piece Fiberglass Front & Rear Caps
- ♦ Invisible Front Paint Protection
- ♦ One-Piece Windshield
- ♦ Full-Body Paint Packages with Gel-Coat Sidewalls
- ♦ Automatic Leveling Jacks with Touchpad Controls
- ♦ Side-Hinged Locking Compartment Doors
- ♦ Basement Pass-Through Storage
- ♦ Easy Slide Storage Tray
- ♦ Power Entry Door & Patio Lateral Arm Awnings with Integrated LED Lighting
- ♦ Slideout Room Topper Awnings
- ♦ Patio Light (Both Sides)

- ♦ Roof Ladder
- ♦ Frameless Dual Pane Windows
- ♦ 10,000-lb. Trailer Hitch with 7-pin Round Connector

AUTOMOTIVE & COCKPIT

- ♦ 7" Touchscreen Dash Radio with Bluetooth®, GPS Navigation & SiriusXM® Radio
- ♦ Back-Up Monitor with Three Camera System
- ♦ Chrome Heated/Power Mirrors with Integrated Side View Cameras
- ♦ Leatherette Reclining/Swivel Power Adjustable Captain's Chairs (Passenger Seat has Electric Footrest)
- ♦ Driver & Passenger Overhead Storage Cabinetry
- ♦ Cruise Control
- ♦ Emergency Engine Start Switch
- ♦ Map Lights
- ♦ Dash Fans
- ♦ Air Horns
- ♦ Fog Lights
- ♦ Power Solar & Privacy Shades on Windshield
- ♦ Manual Solar & Privacy Shades on Side Windows
- ♦ Electric Step Cover
- ♦ 275/80R 22.5" Radial Tires with Aluminum Wheels

- ♦ Power Drop-Down Hide-Away Overhead Bunk with Cotton Cloud™ Mattress

AUTOMOTIVE & COCKPIT OPTION

- ♦ Remove Power Drop-Down Hide-Away Overhead Bunk with Cotton Cloud™ Mattress

INTERIOR

- ♦ Porcelain Tile Throughout
- ♦ Ceiling Ducted Whisper Air™ Central Cooling System
- ♦ LED Lighting
- ♦ High-Gloss Glazed Cabinetry with Solid Wood Raised Panel Cabinet Doors & Nickel Finish Hardware
- ♦ Solid Wood Veneer
- ♦ Window Privacy Roller Shades
- ♦ Leatherette Sofa Bed (3901 & 4000)
- ♦ Leatherette Expanding L-Sofa (3701)
- ♦ Leatherette Reclining Theater Seating with Footrests (3401, 3902 & 3901)
- ♦ Leatherette Dream Dinette® Booth
- ♦ Electric Fireplace with Remote Control (3901, 3701, & 3902)

INTERIOR OPTIONS

- ♦ Leatherette Sofa Bed (3401 & 3901)
- ♦ Leatherette Triple Reclining Theater Seating with Footrests (3701)
- ♦ Studio Collection Interior Decor Package - Includes: Satin Cabinetry with Solid Wood Flat Panel Doors and Porcelain Plank Flooring

KITCHEN

- ♦ 16 cu. ft. Stainless Steel Residential Refrigerator with Ice Maker
- ♦ Electric Induction Cooktop
- ♦ Designer Tile Backsplash
- ♦ 1.9 cu. ft. Stainless Steel Over-the-Range Convection Microwave Oven
- ♦ Solid Surface Countertops
- ♦ Pop-Up Outlets in Kitchen Countertop
- ♦ Large Double Bowl Stainless Steel Sink with Single Handle Faucet & Pull-Down Sprayer
- ♦ 12-volt Attic Fan with Cover

BEDROOM & BATHROOM

- ♦ King Size Bed with Tilt-A-View® Inclining Bed Mechanism
- ♦ Bedspread with Throw Pillows
- ♦ USB Charging Ports in Nightstands
- ♦ Foot Flush Porcelain Toilet

- ♦ Macerator Toilet (3901 & 4000)
- ♦ Oversized Full Height Shower with Glass Door
- ♦ Second Full Height Shower and Tub with Glass Door (4000)
- ♦ 12-volt Attic Fan with Cover in Bathroom

ENTERTAINMENT

- ♦ 55" TV in Living Area (3901)
- ♦ 49" TV in Living Area (3401, 3902, & 4000)
- ♦ 43" TV in Living Area (3701, & 3901)
- ♦ 32" TV in Cockpit Overhead (3401, 3701, 3902, & 4000)
- ♦ JBL® Sound Bar with Bluetooth®
- ♦ Sony® Blu-Ray Player in Living Area & Bedroom
- ♦ 32" TV in Bedroom
- ♦ Two (2) 15" LED TV/DVD Combo in Bunk Bed Area (4000)
- ♦ Exterior 39" TV on Manual Swivel and Sound Bar with Bluetooth®
- ♦ Bedroom Satellite Ready – HDMI & Coaxial
- ♦ Cable TV & HDMI Video Ready
- ♦ Winegard® Connect™ WiFi / 4G / TV Antennm

ELECTRICAL & PLUMBING

- ♦ Cummins Onan® RV QD 8000 Diesel Generator
- ♦ Automatic Generator Start
- ♦ 50-amp Shoreline Power Cord

- ♦ 2000-watt Pure Sine Inverter /100-amp Converter
- ♦ Dual 15,000 BTU Mid-Profile Ducted Air Conditioners with Heat Pumps
- ♦ Energy Management System
- ♦ Rapid Camp+® Multiplex Wiring Control System with 7" Screen, App-Enabled & SurgeGuard® Electrical Protection
- ♦ 100-watt Solar Charging System with Power Controller
- ♦ Four (4) Auxiliary House Batteries
- ♦ Battery Disconnect Switch
- ♦ Exterior GFCI Recept
- ♦ Exterior LP Connection
- ♦ Tankless Water Heater
- ♦ Water Heater Bypass System
- ♦ Enclosed & Heated Holding Tanks
- ♦ E-Z Flow Water Panel with Whole-House Water Filtration
- ♦ Black Tank Flush System
- ♦ 360° Siphon® RV Holding Tank Vent Cap
- ♦ Outside Shower
- ♦ Stackable Washer & Dryer

For a complete listing of available features, visit thormotorcoach.com/aria.





Made to fit.

IMPORTANT—PLEASE READ: This brochure reflects product design, fabrication, material, components and specifications at the date of printing, which date is disclosed below. Please visit us online at ThorMotorCoach.com or consult with your selling dealership for the latest in standards, options, specification and technical information. Photographs in the brochure may depict optional equipment or may only be available in certain floor plans. Components, appliances and the chassis may have been manufactured in a calendar year before the vehicle's designated model year. All capacities are approximate. The actual length of the vehicle may differ from that indicated in the brochure due to variances in the manufacturing processes and/or installed components. All dry weights are based on standard model features and do not include optional features or equipment. Component part and appliance manufacturers issue limited warranties covering portions of the vehicle not covered under the limited warranty we issue. Copyright Thor Motor Coach, Inc. © OH 01/03/20



thormotorcoach.com/aria
P.O. Box 1486, Elkhart, IN 46515 Sales Department: 800.860.5658 Customer Service: 877.855.2867